

# Avoided Conversion of Farmland:

Helping to Meet California's Greenhouse Gas Reduction Goals

Edward Thompson, Jr., American Farmland Trust

Dr. Louise Jackson, U.C Davis Emerita

Julie Alvis, Deputy Assistant Secretary of Natural Resources

Marc Del Piero, Agland Trust of Monterey County

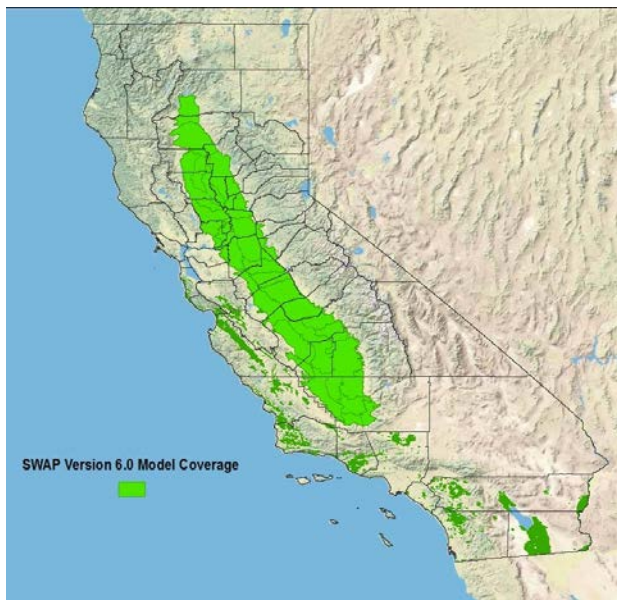


The mission of American Farmland Trust is to protect farmland, promote environmentally sound farming practices and help farmers stay on the land.

**No Farms  
No Food**

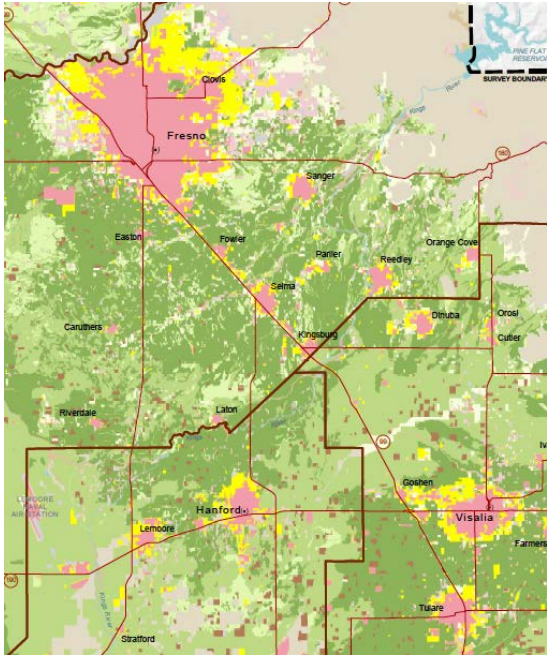
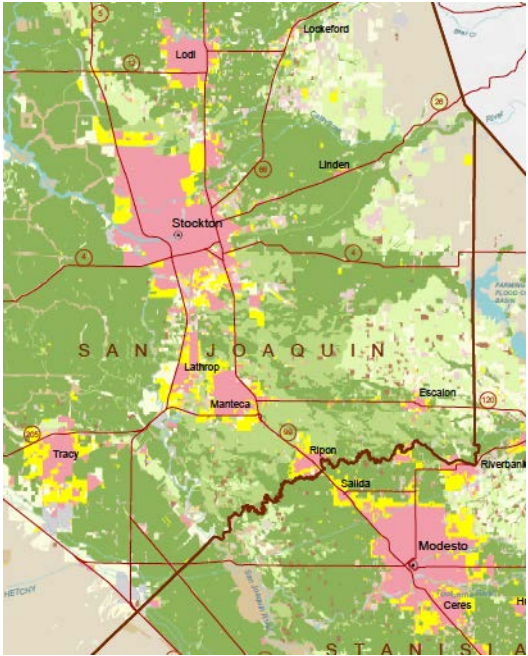


# Physical Pressures on California Farmland

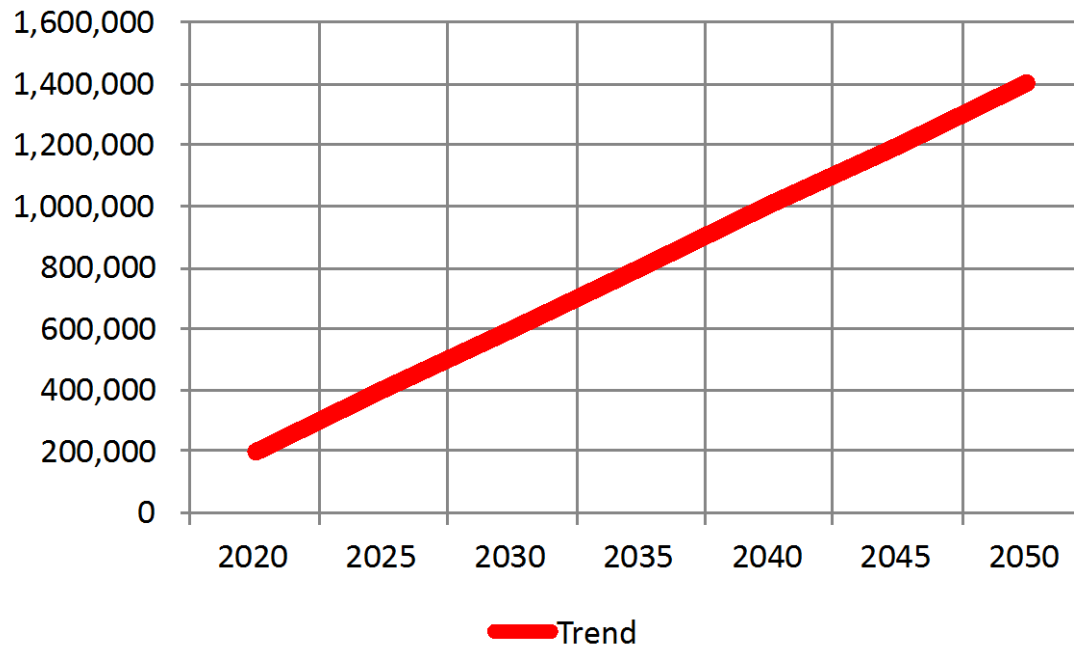


- Drought/Water Supplies
- Environmental Needs
- Climate Change
- Conversion to Non-Ag Uses

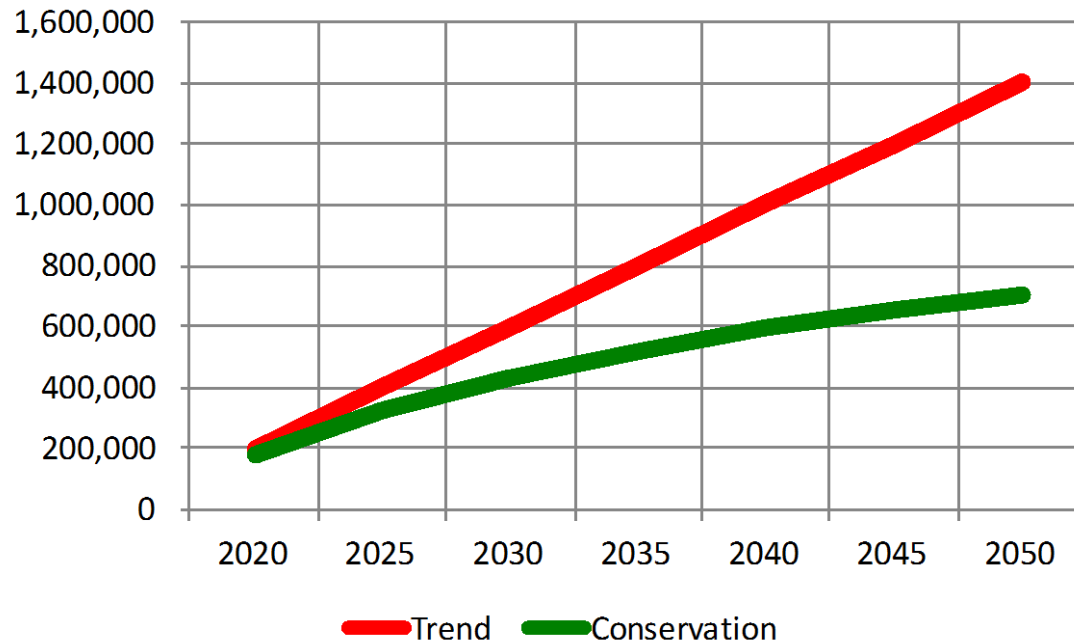
# Farmland Conversion Trend: 39,500 Acres/Year Converted to Urban Use



## Projected Conversion of California Farmland



## Projected Conversion of California Farmland



“Because average greenhouse gas emissions from urban land uses are orders of magnitude higher than those from California’s croplands ... **farmland preservation**, more than any of the other [agricultural] management activities, will likely have the **single greatest impact** in stabilizing and reducing future emissions across multiple land use categories.”

Steven W. Culman, Van R. Haden, Toby Maxwell, Hannah Waterhouse and William Horwath,  
*Greenhouse Gas Mitigation Opportunities in California Agriculture: Review of California Cropland Emissions and Mitigation Potential*, Duke Nicholas School for Environmental Policy Solutions, 2014, at 35.

