

The Delta Carbon Program: Engaging Farmers at the Local Level



Ryan Anderson

Joint X-AGG Meeting
Chicago, IL
October 5, 2010



Delta Institute

Transform the Great Lakes region into a vital center of the green economy.

Achieve green ratings for 100 buildings & develop 200 sustainability programs



Generate \$250 million in investments for pollution prevention, remediation and reuse

Create 50 cutting-edge sustainable models for community economic development



Make green choices a part of mainstream thinking



Reduce carbon emissions by 12 million tons

- Carbon Aggregation
- Protocol Development
- Energy Efficiency Implementation



Program Origins

In 2005 the Illinois Environmental Protection Agency asked Delta if we could assist in figuring out how to link agricultural producers to the carbon market.



\$20,000 grant enabled us to create the Illinois Conservation and Climate Initiative by forming an innovative partnership with the State, several agencies, SWCDs, and a wide-ranging advisory committee. The initial focus was conservation tillage.

Delta needed to understand the agricultural system, identify key organizations to help with implementation, and understand the greenhouse gas market.

From the outset, aggregation and county-level involvement were considered essential to program success.

Program Structure

- Advisory committee was formed, consisting of government agencies, academics, professional and trade organizations, and NGOs.
- Regular meetings held to create a system to enroll qualifying projects and identify the necessary organizations for program implementation.

Outreach and Education:

State Agencies, Conservation Districts, Advisory Committee Members.

Enrollment:

Conservation Districts and Delta Institute

Aggregation, Trading and Payments:

Delta Institute

Verification:

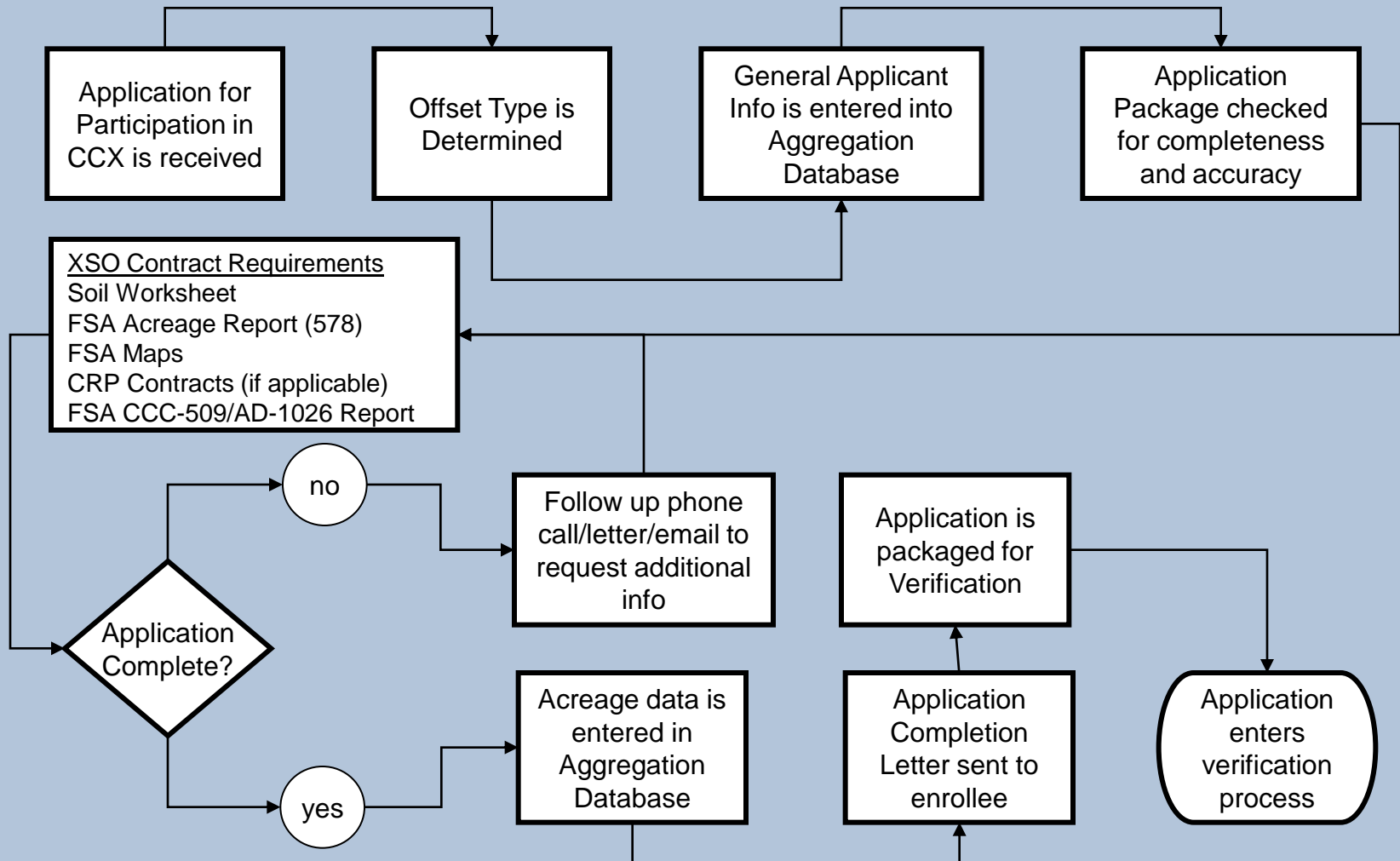
Soil and Water Conservation Districts

Advisory Committee Members

- Delta Institute
- Illinois Environmental Protection Agency
- Illinois Department of Natural Resources
- Illinois Department of Agriculture
- Association of Illinois Soil and Water Conservation Districts
- SWCD Employee Work Group
- USDA-IL Natural Resources Conservation Service
- USDA-IL Farm Service Agency
- Illinois Association of Resource Conservation & Development Areas
- University of Illinois
- University of Illinois Extension
- Illinois Association of Professional Farm Managers & Rural Appraisers
- Illinois Farm Bureau
- The Nature Conservancy
- Illinois Soybean Association
- Illinois Corn Growers Association
- Illinois Forestry Development Council
- Illinois Beef Association
- Illinois Pork Producers Association

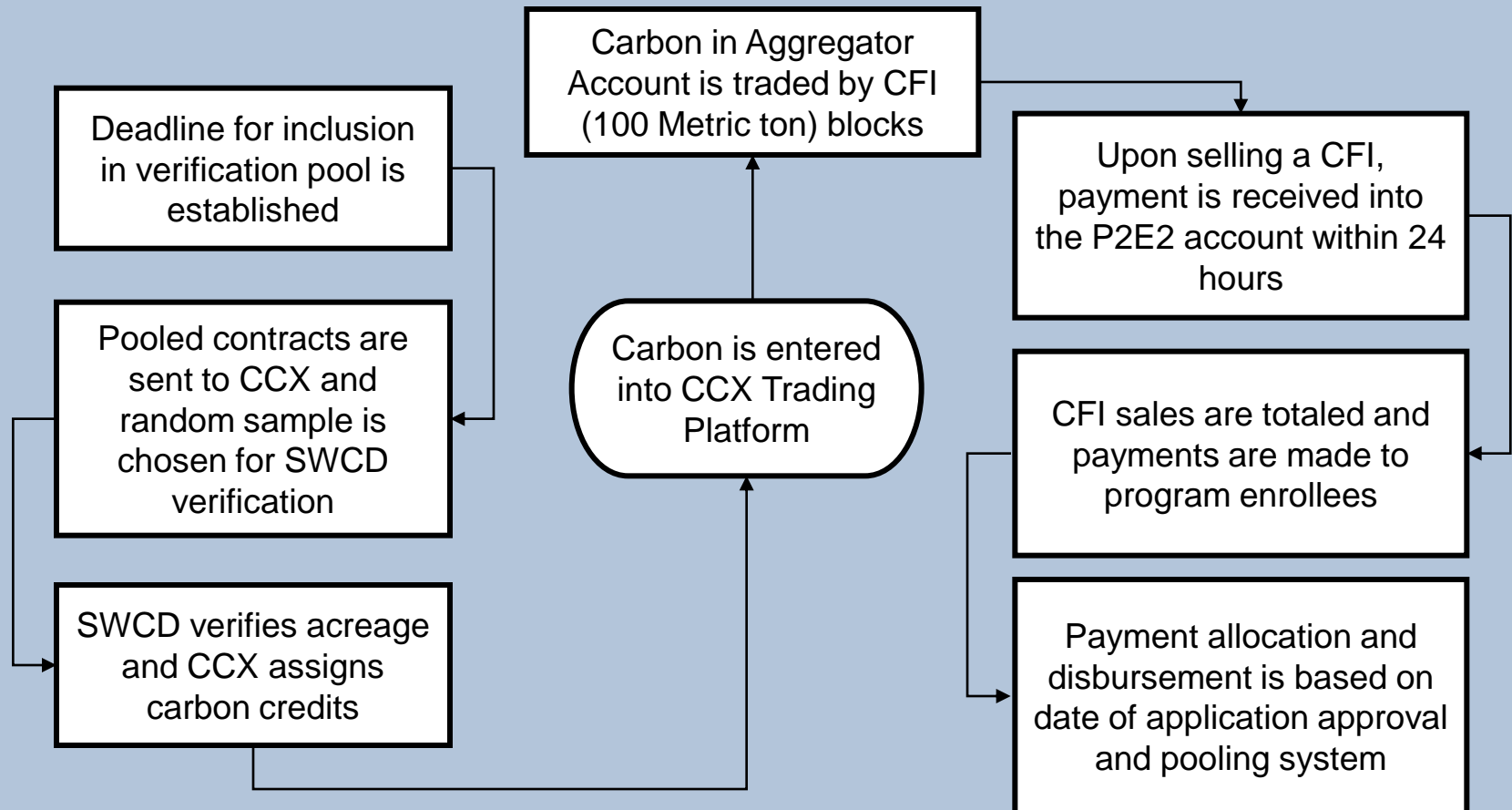
Aggregation Administration

- Data management is key in managing a variety of agricultural projects.
- Delta structured a formal internal system to review enrollments.
- Delta created a database system with spreadsheet outputs to track key aspects of offset projects.

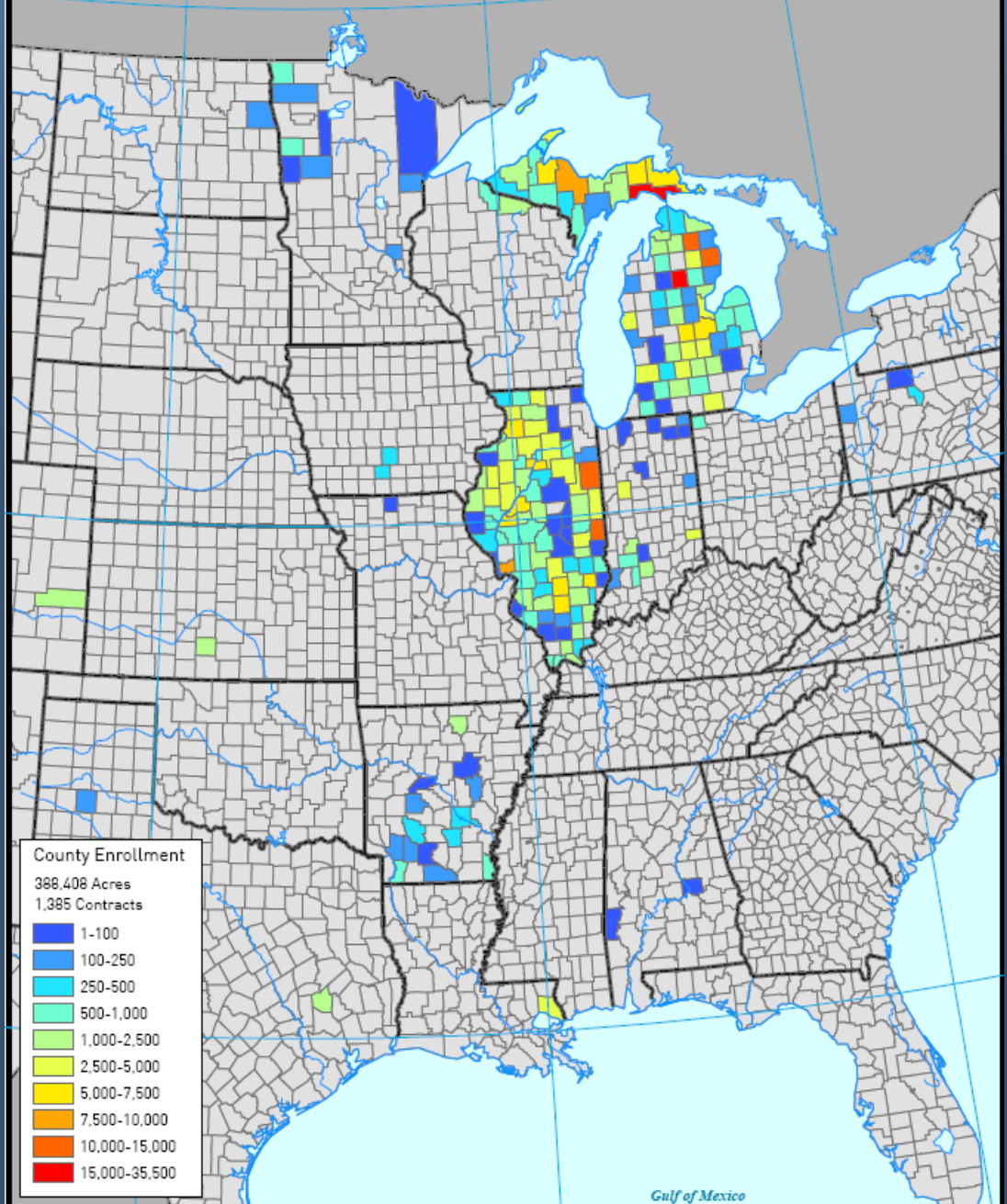


Aggregation Administration

- After a contract is approved, it is added to the current pool and packaged for verification.
- CCX requires an approved third-party organization to verify at least 10% of all contracts and site visit at least 10% of all enrolled land.
- Once a pool is verified, the carbon offset credits are registered on the Chicago Climate Exchange, and trading occurs.



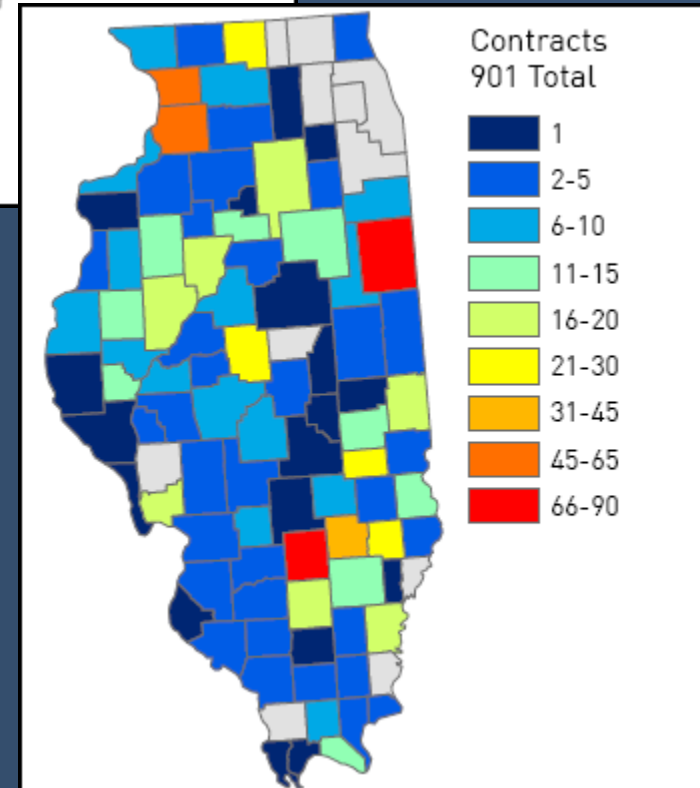
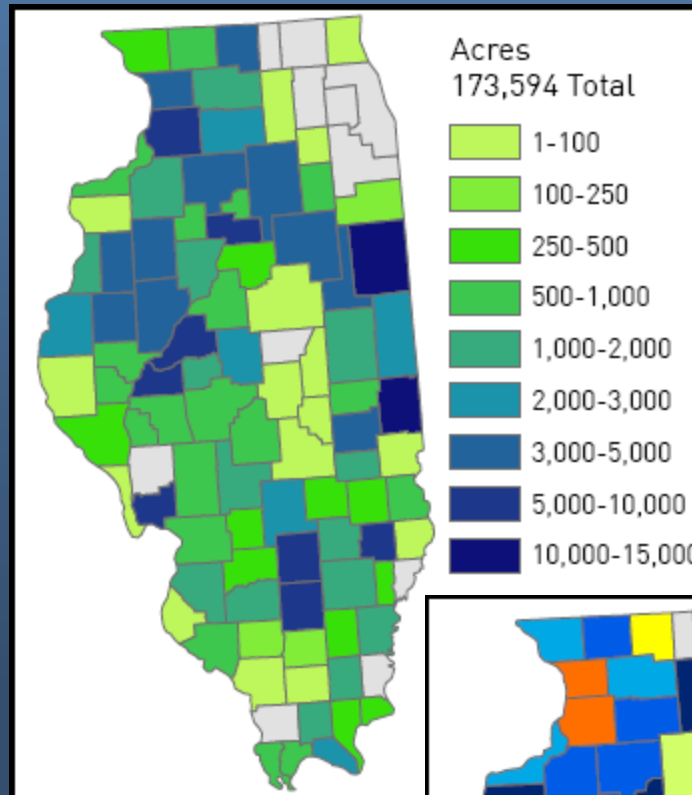
Aggregation Enrollment



Acreage Submitted	All States
Total	388,408
Grass Acreage	49,914
Tillage Acreage	171,795
Forestry Acreage	24,955
Managed Acreage	141,745
Contracts Submitted	All States
Total	1,385
Soil	808
Grass	500
Tillage	127
Grass & Tillage	181
Forestry	425
Managed	152

ICCI Aggregation Enrollment

Acreage Submitted		IL
Total	173,594	
Grass Acreage	27,393	
Tillage Acreage	127,683	
Forestry Acreage	17,216	
Managed Acreage	1,302	
Contracts Submitted		IL
Total	901	
Soil	557	
Grass	322	
Tillage	91	
Grass & Tillage	144	
Forestry	339	
Managed	5	



Program Results

- Delta launched a similar program in Michigan (MCCI), and has enrolled projects in 16 other states.
- 12 project pools verified and 3 pending.
- Over 635,000 tons traded, roughly 1/3 soil and 2/3 forestry.
- Nearly \$2.1 million in revenue returned to enrollees.
- Over \$200,000 in revenue to Delta through an 8-10% aggregation fee to administer the program and use for expansion of other programs.
- Delta has successfully developed new CCX protocol for Sustainably Managed Forests, as well as new applications of Energy Efficiency and Ozone-Depleting Substance Destruction Protocol.





Ryan Anderson
312-554-0900 x14
randerson@delta-institute.org

More info:
www.deltacarbon.org
www.delta-institute.org

53 W. Jackson Blvd.
Suite 230
Chicago, IL 60604



Delta Institute