

# ACCOUNTING FOR CARBON SEQUESTRATION ON US RANGELANDS

Environmental Defense Fund

Colorado State University

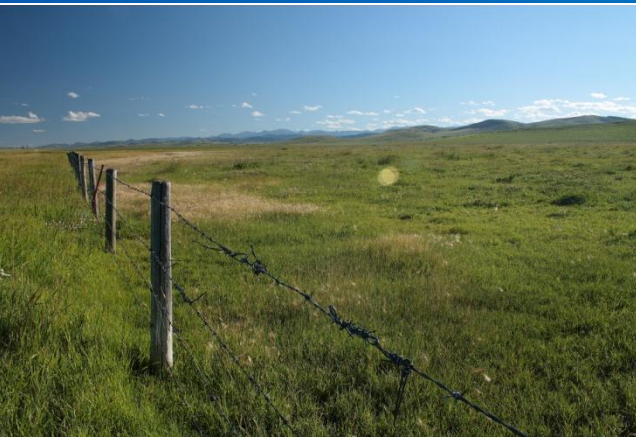
UC Berkeley

Belinda Morris  
C-AGG, March 30, 2011



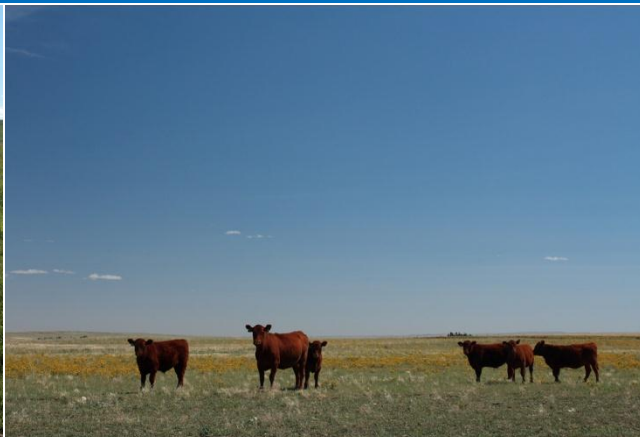
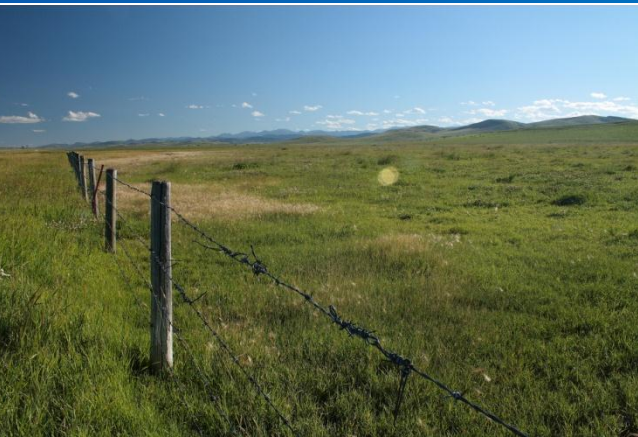
# CIG Project's 3-year objectives

- Develop rangeland carbon accounting methodologies
- Test methodologies across ecosystems
- Analyze environmental and economic impacts



# Three Project Types

- Avoided conversion of native rangelands and Conservation Reserve Program (CRP) lands
- Restoration of croplands to grasslands
- Management of working rangelands



# Field Trials

- Five rangeland ecosystem types (2 to 6 private land sites within each ecosystem type)
  - Oak Woodlands (California) - *Restoration and management*
  - Northern Mixed Prairie (Montana) - *Avoided conversion, restoration, management*
  - Conservation Reserve Program Fields (Colorado) *Avoided conversion*
  - Sagebrush Steppe (Idaho) – *Avoided conversion*
  - Southern Mixed Prairie (Texas/Oklahoma) – *Avoided conversion, restoration and management*

# Science & Modeling

- Lit review building on previous meta-analyses and compiling new data from USDA/ARS focused on the 3 project types
- Data used to validate grass and savanna vegetation sub models in CENTURY
- Estimate precision and adjust for significant biases in model predictions associated with project types

# Methodology Development

- Project-level accounting methods for 3 project types
- Development of methodology/protocol for the 3 project types
  - Boundaries/baselines
  - Aggregation
  - Validation
  - Carbon pools
  - Etc.
- Environmental & economic impact assessments

# Thank you

Belinda Morris, EDF

